

Dear customers,

you are looking at the catalogue of products and services which our company offers.

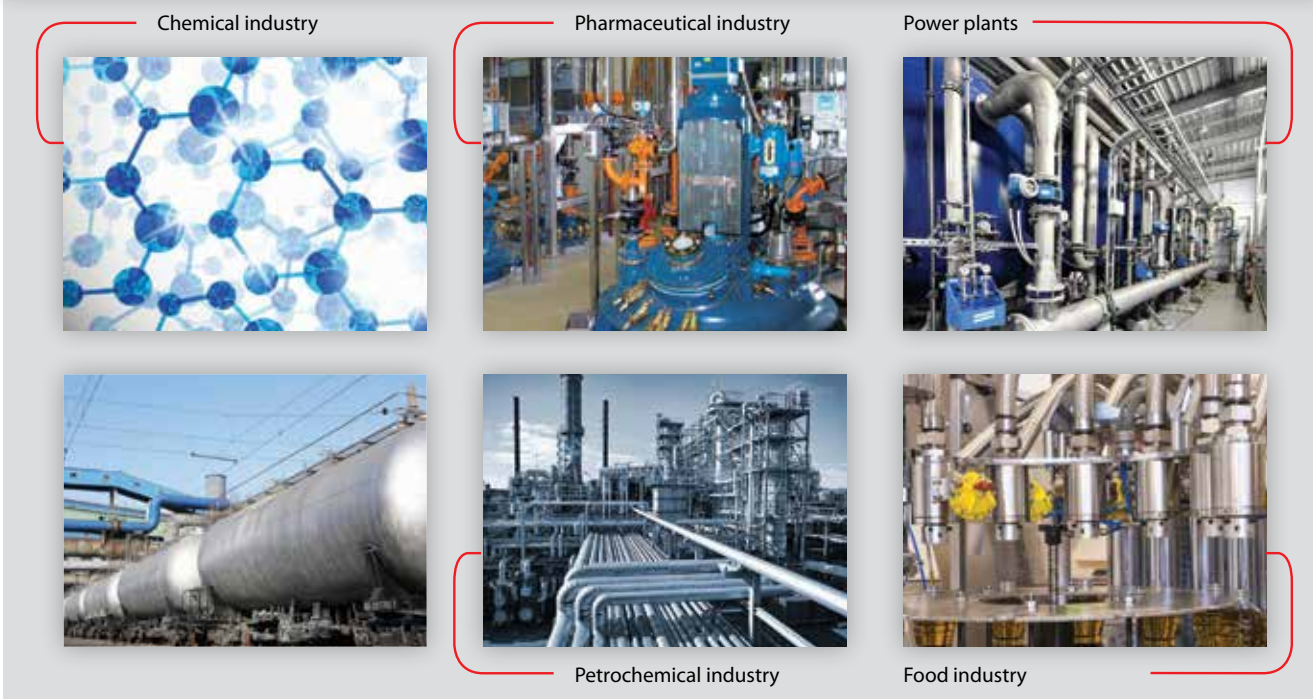
Allow me to introduce the company. The company operates in the Cinkarna Celje company, a well-organized company, which has been active on the international outlets for more than ten years. It is situated near Celje, in the direction towards the east. Its business area are chemical and metallurgical processes demanding high-quality technology and durable materials.

The business outlet is called POLIMERI. Its primary business area is servicing the production and ensuring the aggressive agents decantation systems and protection of metal delivery and reinforced concrete systems. We are used to extreme conditions which the production processes are exposed to. We gain know-how and experience from solving our own problems.

We are proficient in rubber and polymer which is best known as Teflon®. We have developed the products shown in the catalogue which provide answers for many questions. Hopefully they can also answer some of your questions. We are a responsible team striving for development and testing for the products which we produce. The development departments of our suppliers enable us to be connected to the outside European knowledge which is an important and successful supplement to our experience.

Some of you probably already know us since our products are useful in many production areas. Therefore I greet our old acquaintances, and for the ones who have come across our trademark for the first time: we recommend you to have a look at the catalogue. Hopefully you'll find some of the answers to the tasks and objectives pursued.

Darko Košak
Director Darko Košak



Other products:



THE PROCESSING OF FLUOROPOLYMERS

PTFE processing
PTFE piston rings
Thin wall PTFE tubes
Veflex tape
PTFE seals



POWDER APPLICATIONS

PVDF, E-CTFE, ETFE, PTFE DISPERSIONS, PAINTS

PVDF application – Repcoat
ETFE application
E-CTFE application – Halar
PTFE dispersions
Powder coating



RUBBER LINING PROCESS EQUIPMENT

Rubber lining
Diaphragm valves
Elastic couplings



Chemical processing equipment

BALL VALVES



Cinkarna Celje,
Metallurgical and Chemical Industry Celje d.d.
Kidričeva 26, SI-3001 Celje
www.cinkarna.si



Miha Kuzman
t: +386 (0) 3 427 66 45
m: +386 (0) 31 618 835
f: +386 (0) 3 427 66 39
e: miha.kuzman@cinkarna.si

Janez Hrovat
t: +386 (0) 3 427 66 46
m: +386 (0) 41 247 007
f: +386 (0) 3 427 66 39
e: janez.hrovat@cinkarna.si

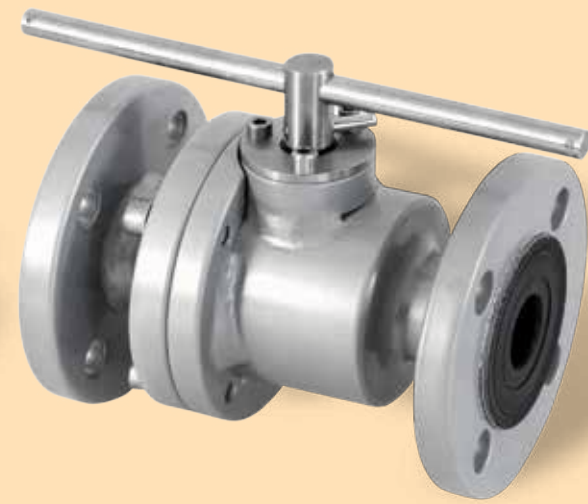
Luka Fideršek
t: +386 (0) 3 427 66 44
m: +386 (0) 31 226 053
f: +386 (0) 3 427 66 39
e: luka.fidersek@cinkarna.si

Types of Ball valves



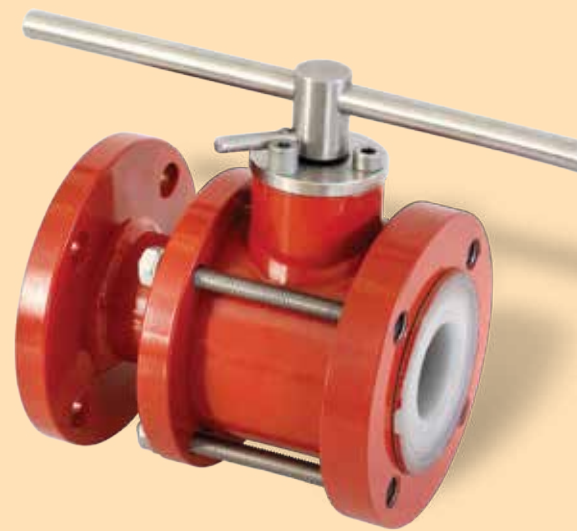
THREE-PART BALL VALVES

- protected with FEP, PFA, PFA-C
- Dimensions DN 15-100, NP 16
- Mounting dimensions EN 558-1 DIN 3202 F1



TWO-PART BALL VALVES

- protected with FEP, PFA, PFA-C
- Dimensions DN 15-100, NP 16
- Mounting dimensions EN 558-1 DIN 3202 F1

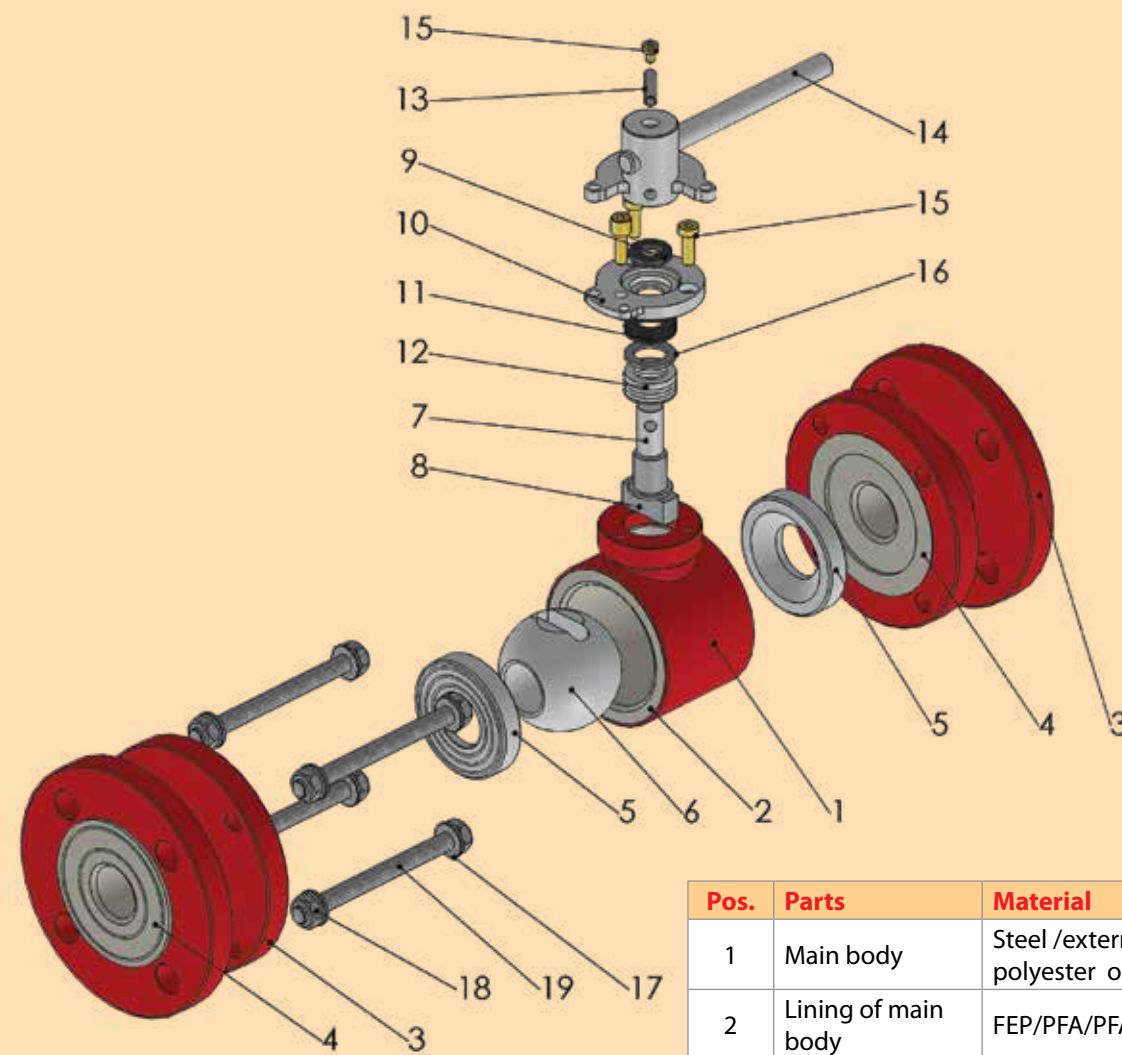


BALL VALVES ANSI 150LBS PN 16

- protected with FEP, PFA, PFA-C
- Dimensions ½"-4"
- Mounting dimensions ANSI B 16.10



Ball valves Construction

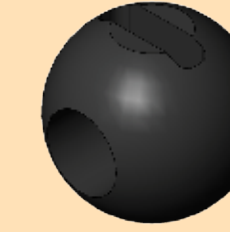
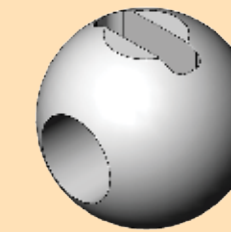


Pos.	Parts	Material
1	Main body	Steel /external coat Epoxy/ polyester or Stainless steel
2	Lining of main body	FEP/PFA/PFA antistatic
3	Flange end piece	Steel /external coat Epoxy/ polyester or Stainless steel
4	Lining of flange	FEP/PFA/PFA antistatic
5	Seat ring	PTFE/PTFE antistatic
6	Ball	PTFE/PTFE antistatic, PFA/ PFA antistatic, Al2O3, ZrO2
7	Steam unit	Steel
8	Lining of steam unit	FEP/PFA/PFA antistatic
9	PTFE ring	PTFE antistatic
10	Flange 1	Stainless steel
11	Spring set	Spring steel
12	Packing bellows	PTFE/PTFE antistatic
13	Spring bolt	Spring steel
14	Lever	Stainless steel
15	Bolt	Stainless steel
16	Gland ring	Stainless steel
17	Washer	Stainless steel
18	Nut	Stainless steel
19	Screw	Stainless steel

Variants of Ball gate elements

PTFE BALL

- virgin PTFE
- conductive PTFE



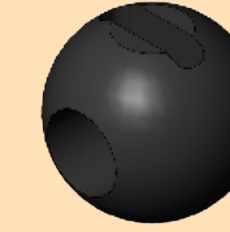
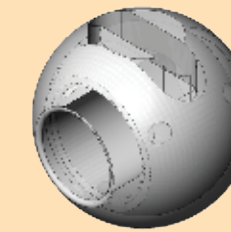
PTFE V BALL

- virgin PTFE
- conductive PTFE



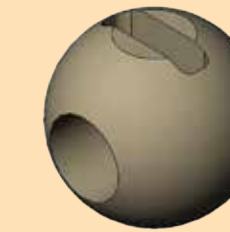
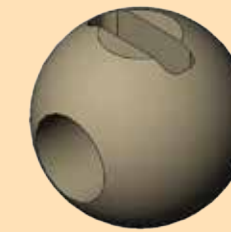
PFA BALL with Aluminium core

- virgin PFA
- conductive PFA



CERAMICS BALL

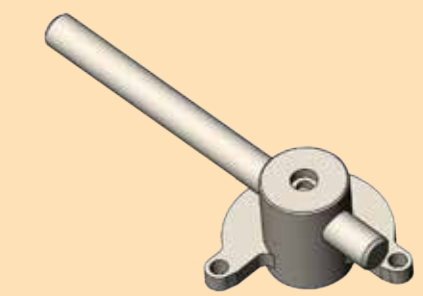
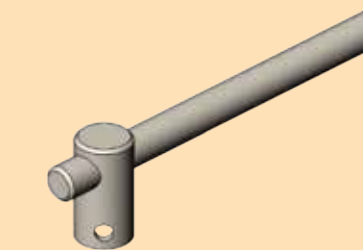
- Al2O3
- ZrO2



Parts for manual or automatic operation

Handlevers

- Standard
- Lockable handlever



ISO top flange for actuators

- Bracket
- Coupling

